



GLASSCOMPANY 
www.glasscompany.com

Company Profile

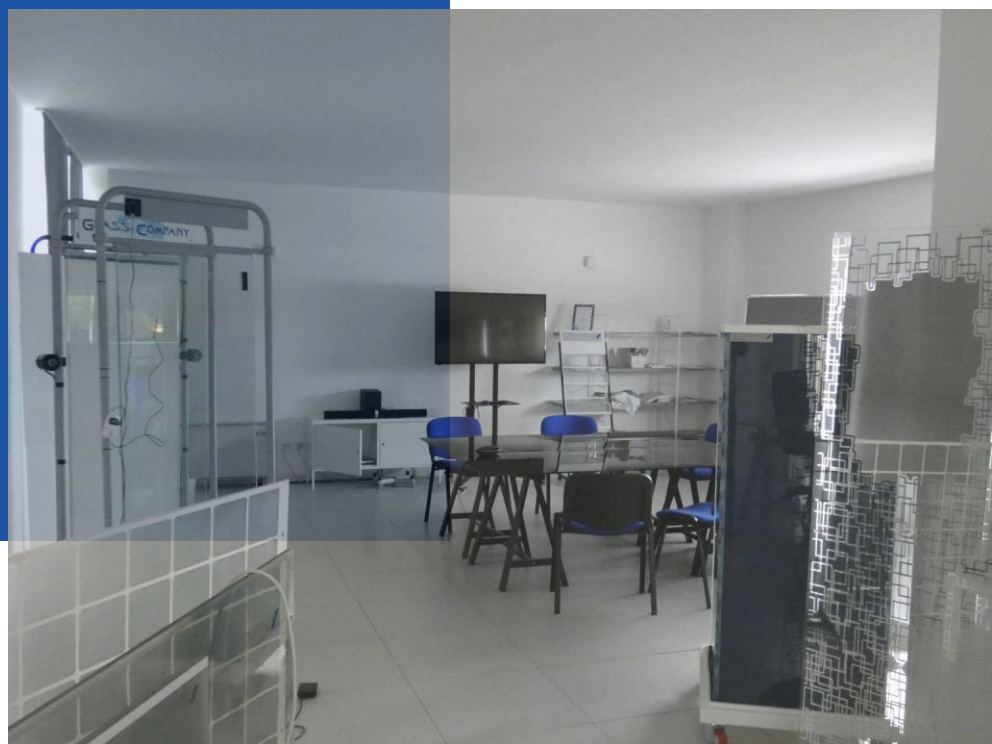
Company



**25 years of passion and
innovation in glass technology**



The **heart** and **mind**
of Glass Company



technology at the service of glass processing

competence, experience, creativity

Glass Company is a leading provider of solutions for glass processing, founded with the aim of supporting companies in the industry through a complete range of machinery, equipment, tools, and raw materials.

Dynamic and innovation-oriented, Glass Company stands out for introducing cutting-edge technologies to the market, actively contributing to the evolution of production processes, operational efficiency, and the success of its customers.

Message CEO



Discovery consists of **seeing** what everybody has seen and **thinking** what nobody has thought.

Albert Szent-Györgyi

Since 2001, **Glass Company** has been engaged in the manufacturing and marketing of machinery for glass processing, with a particular focus on systems for safety glass production: tempering furnaces, EVA lamination furnaces, and complete PVB lamination lines with autoclave.

The product range also includes laser machines, equipment for EI fire-resistant glass production, coating systems, digital printing, and screen-printing technologies.

In recent years, the company has expanded its expertise by specializing in **High-Tech solutions**: advanced laser systems, coating and surface treatment technologies, smart and multimedia glass, as well as equipment dedicated to the photovoltaic sector.

Glass Company Today: Our Performance in Numbers

500+

Satisfied Clients

Companies in Italy and abroad that have chosen the quality of Glass Company.

200+

Machines Sold

A trusted partner of the leading glass manufacturers in the market.

20+

Professionals

A specialized team dedicated to excellence at every stage of the process.

25

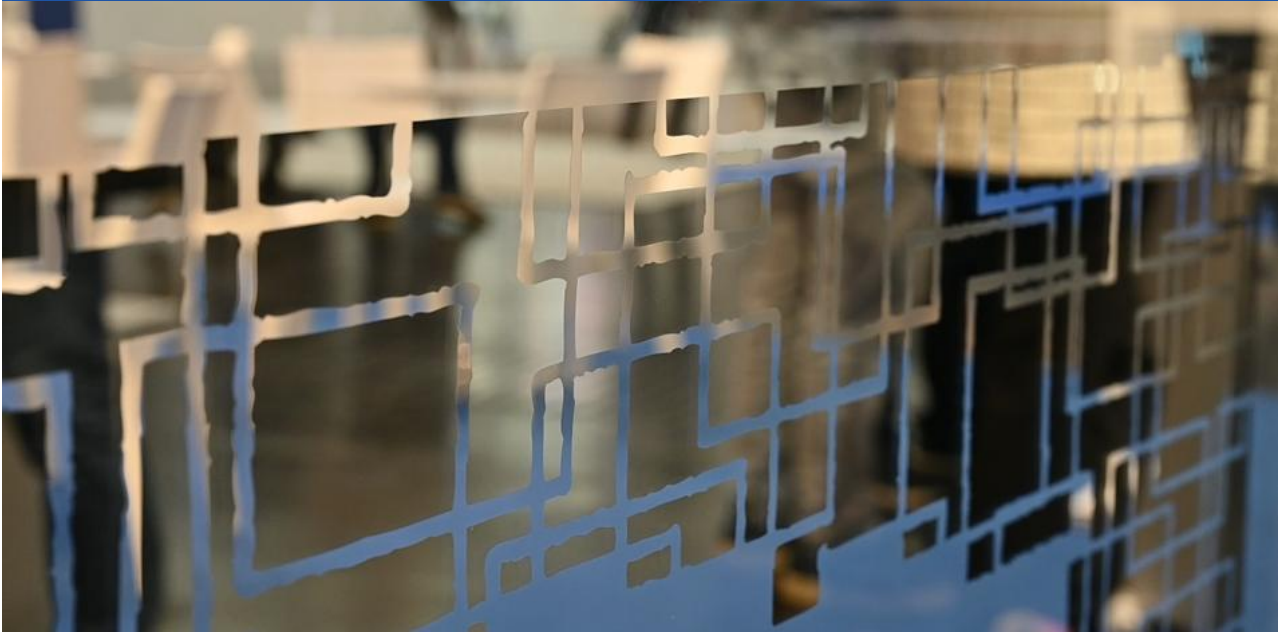
Years of Experience

A quarter of a century of expertise and reliability in the industry.



Our results are driven **by a team** that works together to transform **experience into performance.**

Our Vision



guided by a **vision**,
we grow with **passion**

Have you ever heard of a company's vision and mission?

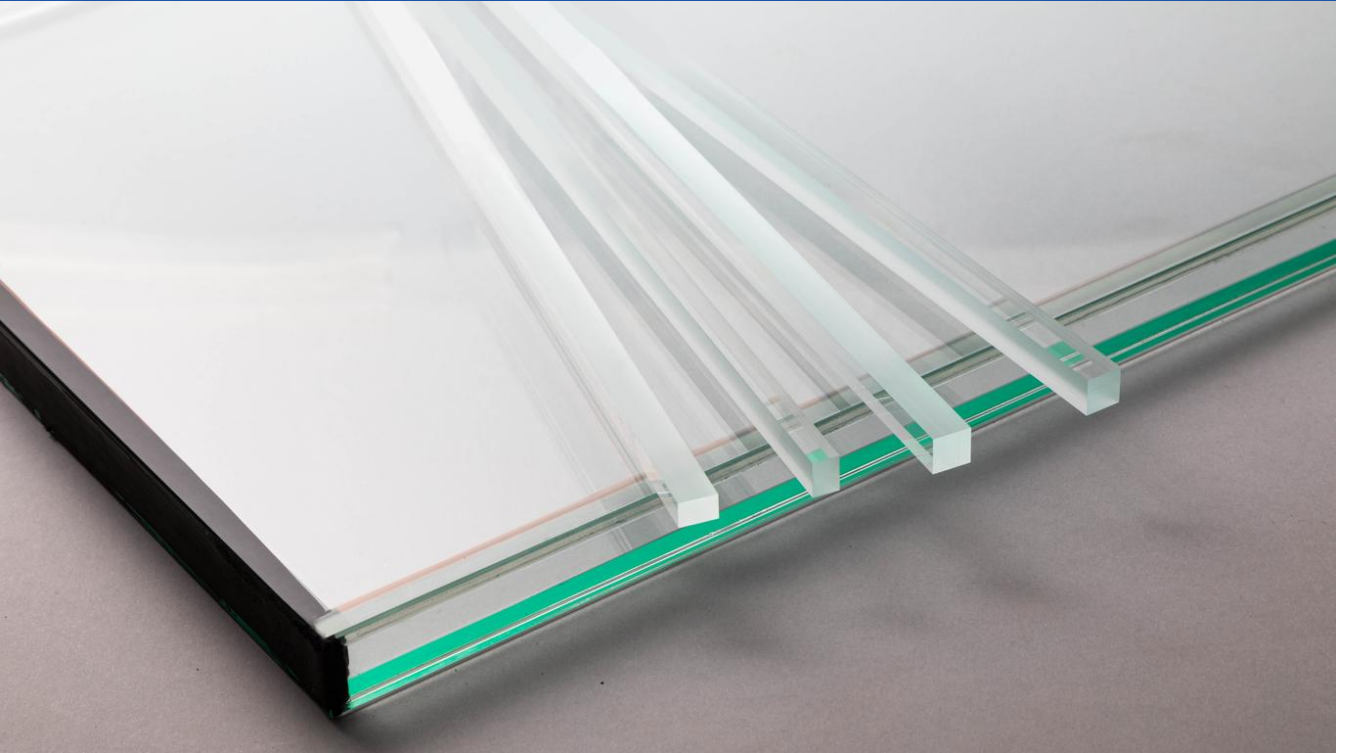
They are the strategic pillars that define a company's direction and core objectives. They represent the path to follow, made up of concrete goals and aimed at sustainable growth.

With this awareness, **Glass Company** — driven by enthusiasm and a passion for excellence — has built its strategy by focusing on innovation, continuous improvement, professional growth, the protection of workers' health and safety, environmental responsibility, transparency, and accountability.

We have carefully planned our resources to become a point of reference in the industry and to offer our customers not only quality, but also value.

To achieve this, it has been essential to listen to them, understand their needs, and focus on what truly matters: improving their services, opening up new opportunities, and offering increasingly effective solutions.

e Our Mission



The key to our success lies not only in continuous research, development, and innovation, but also in our ability to manage each project in a personalized and comprehensive way. From design — often developed in close collaboration with the customer — to installation, maintenance, and technical support, every stage is handled with the utmost attention to detail. We develop tailor-made solutions to precisely meet the specific needs of each client, ensuring effective and long-lasting results.



The constant **pursuit of excellence** has no limits

Our team



Technical Expertise

Highly qualified technical and sales team, always up to date.

Shared Values

A corporate culture based on quality, reliability, and customer service.

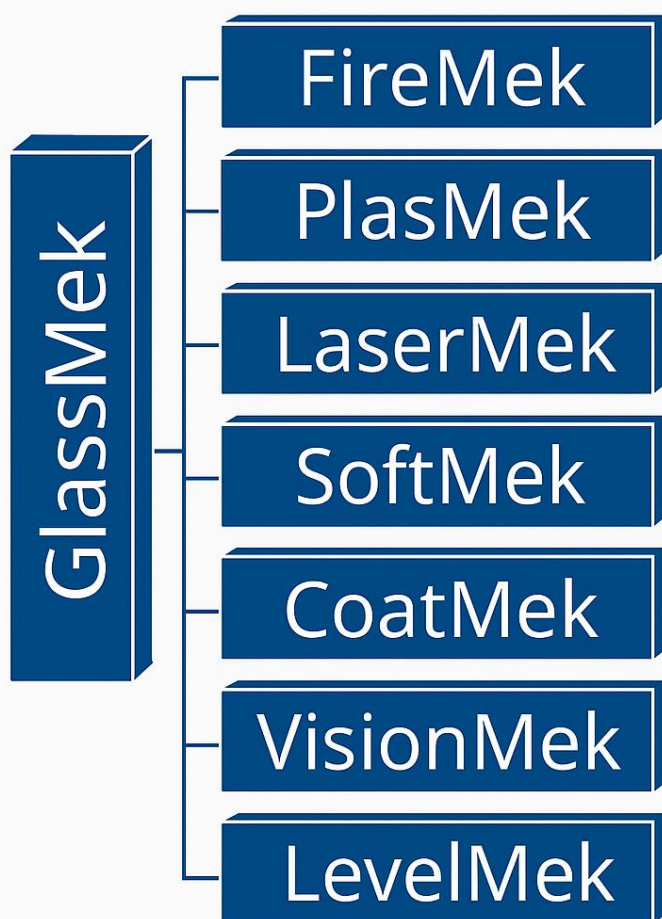


Success is built together

Our Divisions

The constant commitment to research and the development of innovative solutions has made Glass Company one of the leading players in Italy in the field of special machinery and equipment for glass processing, many of which are designed and manufactured in-house.

Thanks to intense technological innovation applied to its systems, the company has established the specialized division **GlassMek**, a name that stands for excellence and advanced engineering.



Our Know-How

FIREMEK



Fire-resistant glass production system

FireMek is a system to produce fire-resistant glass developed by the Glass Company, which is already in use at major multinational companies in the production of fire-resistant glass.

FireMek incorporates sophisticated technology that, combined with extreme ease of use, makes the production of fire-resistant glass no longer the exclusive domain of a few large manufacturers, but thanks to its low price, also suitable for small and medium-sized companies.

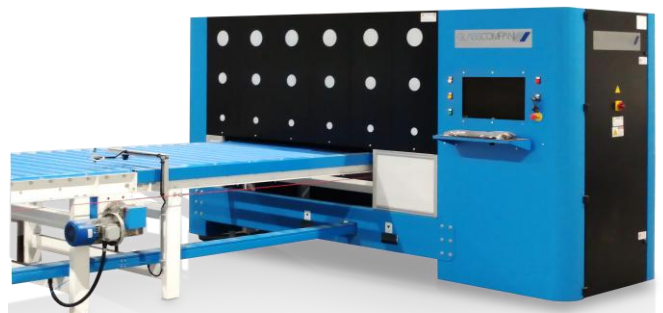
Our fire-resistant glass production line **FireMek** is versatile and can also be used to produce bulletproof glass. With the precision of lamination and filling processes, we can produce glass with high bulletproof and impact resistance.

Atmospheric plasma

Atmospheric plasma treatment has revolutionized the way glass surfaces are prepared for subsequent processes. Offering superior cleanliness, better adhesion and ecological benefits, it is no surprise that this cutting-edge technology is becoming a standard in the glass industry.

By investing in plasma treatment, manufacturers can achieve higher quality products with greater durability and improved performance.

PLASMEK



Our Laser Technologies



Ultra-fast laser machines

Glass Company offers ultra-fast, high-precision CNC laser machines for glass, ideal for **ablation, engraving, and drilling**. These systems are available in two versions: open-frame or enclosed cabin.

The enclosed version ensures maximum safety thanks to integrated shielding, while the open-frame version offers flexibility for integration with external protection systems.

Versatile and fast thanks to optical scanners, they feature low energy consumption (<1 kWh) and long operational life without the need for consumables, ensuring efficiency and low maintenance costs.

The range includes laser systems dedicated exclusively to ablation, as well as **All-in-One** solutions capable of creating **sandblasted effects** (like traditional sandblasting) and, optionally, performing extremely precise glass drilling.



Laser machine for glass cutting



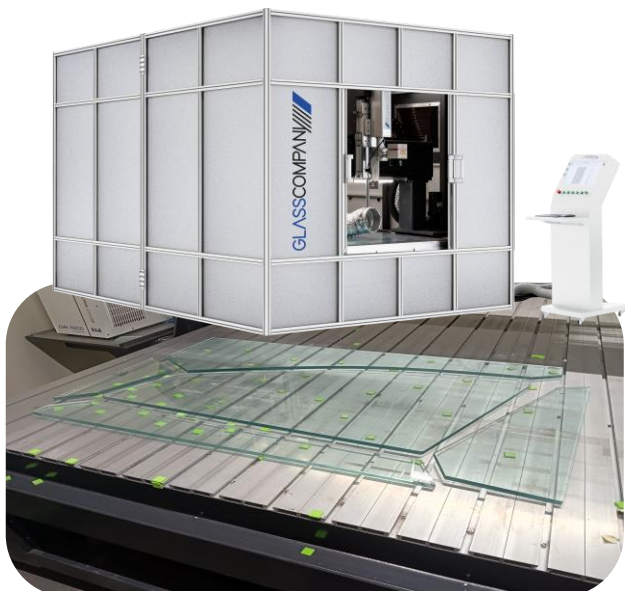
One of the most advanced technologies is **laser glass cutting** through filamentation, suitable for thicknesses **up to 15 mm**.

This technique ensures precise cuts without mechanical stress or defects, improving subsequent processes such as tempering or bending.

It requires neither water nor gas, making it environmentally friendly and reducing the need for post-cut processing.

An efficient, clean, and sustainable solution for glass processing.

Our laser systems are widely used in the automotive sector, interior design applications, household appliance manufacturing, and many other industrial fields.



Our Digital Technologies

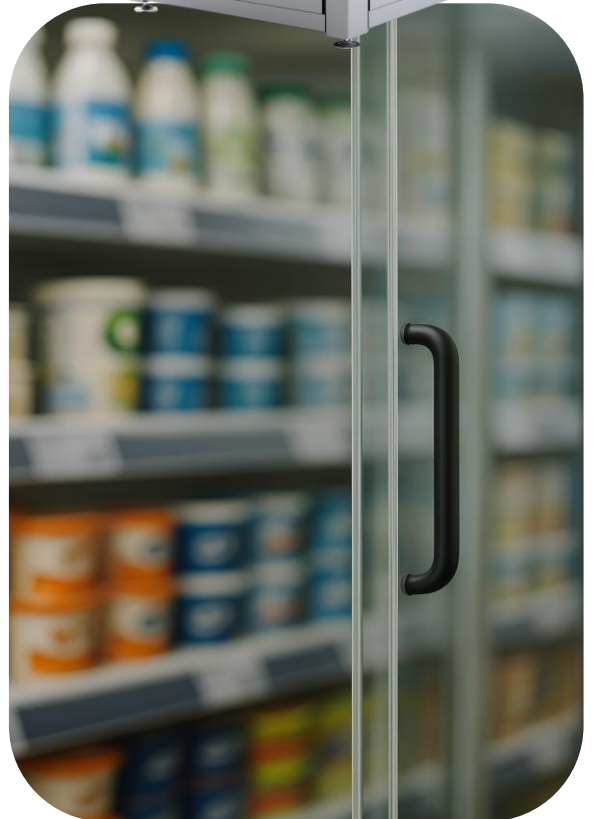
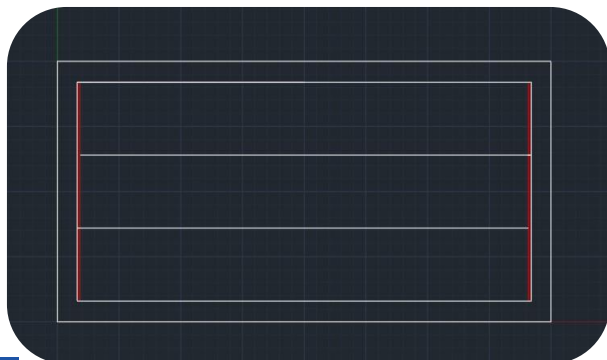
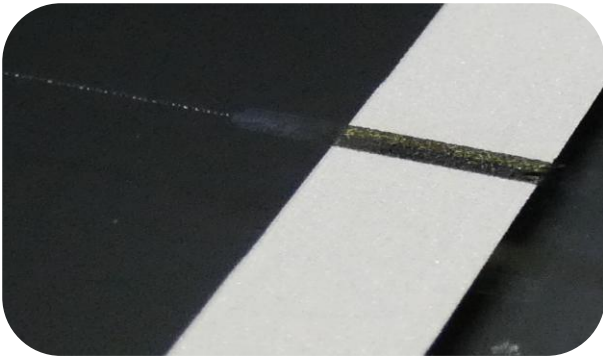
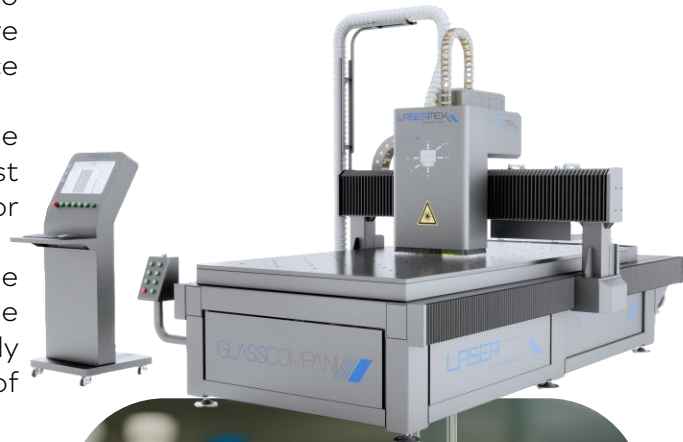


Calculation software for heated glass production

SoftMek is a proprietary software developed and registered by Glass Company, specifically designed to calculate the positioning of cuts (to be made by laser) on the electrically conductive coating applied to glass, in order to produce heated glass with specific characteristics.

The software is engineered to determine the optimal path for the electrical current to best meet the required temperature, power, or resistance specifications.

In addition to performing the calculations, the program also generates a **DXF drawing** of the circuit to be marked, which can be used directly by the laser machine for ablation and engraving of the coating.



Our FULL VISION Solutions

Production line for Full Vision insulating glass units for refrigerators and double glazing for interior design



Processing machine of transparent glass spacers

This machine performs the simultaneous processing of two or four glass profiles, grinding and polishing the edges with precision, with the option of rough or polished edges on the profiles or leaving them sharp-edged.

Double glass assembly machine with clear glass spacers

The pre-processed glass spacers are bonded to the glass pane intended for insulating glass units. The fully automated production cycle begins by preparing the surface of both the profile and the glass pane for bonding using a plasma treatment, which enhances the adhesion of the profiles to the glass. Next, a micro-dispenser applies an ultra-transparent resin, and the profiles are positioned, pressed, and adhered using a UV lamp curing process. Glass profiles are typically applied along the long edges of the pane, while the short edges retain standard spacers equipped with desiccant salts.

VISIONMEK



Our FULL VISION Solutions

GlassSpacer transparent spacers for FULL VISION insulating glass units



GlassSpacer is a ready-to-use glass spacer designed for the production of **Full Vision insulating glass units** filled with gas, where transparency is a top priority. This innovative solution was developed to meet the growing demand for fully transparent insulating glass.

GlassSpacer is a precision glass strip that is easy to apply using dedicated UV adhesive or other bonding methods such as double-sided tapes, EVA, PVB, TPU, or resin. It enables increased productivity in the manufacturing of high value-added insulating glass units.

GLASSSPACER

Glass Company manufactures and supplies high-quality, custom-made **GlassSpacer transparent glass spacers**, produced directly in our facility. These elegant and precise glass spacers are carefully processed using laser technology, ensuring extremely accurate cuts and perfectly smooth surfaces.

GlassSpacer spacers are available for direct sale to our customers.



Our Coating Systems



Paint and nano-coating system

CoatMek is an advanced glass nano-coating system specifically designed and engineered to improve the surface properties of glass.

It provides uniform and durable coverage, ideal for applications requiring high performance and protection.

COATMEK

Nano-coating spray system

The **nano-coating spray bar** applies functional nanometric coatings to glass with exceptional precision.

It can be integrated in-line with a glass washing system or used as a standalone unit.

Key benefits:

- **Available coatings:** Easy-to-Clean, Anti-Reflective, Anti-Graffiti, Anti-Fog
- **Adaptability:** Adjustable parameters for glass of any size, ensuring uniform spray coverage
- **Quality:** 2L stainless steel tank with quick-open design for easy cleaning and product change

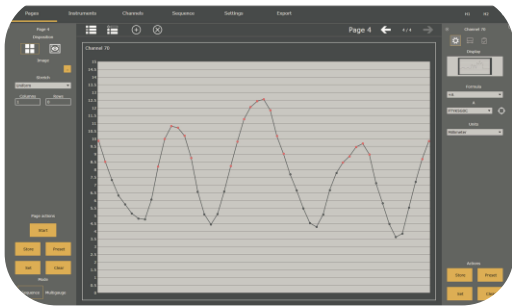
An ideal solution to enhance both the aesthetics and functionality of glass.



Our Instruments

Measuring tools for the glass industry

LEVELMEK



Glass tempering wave distortion meter

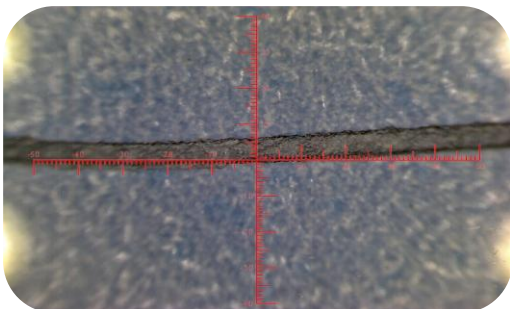
LevelMek is a device designed to measure wave distortions in tempered glass caused by roller passage during the tempering process.

It ensures accurate assessment of surface deformations, which is essential for quality control and compliance with visual glass standards.

The instrument is compliant with **EN 12150-1:2015** regulations.

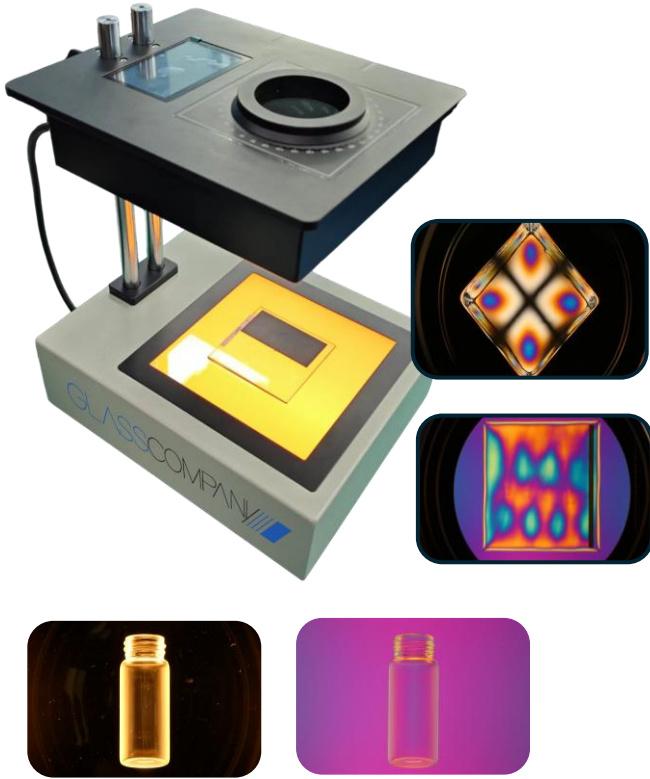
USB microscope with measuring grid

The combination of a high-performance digital imaging module with innovative optics and powerful software make the digital microscope an indispensable tool in quality control for inspecting and recording detailed, ultra-high-definition images, be it glass speckles, scratches, low-E coating etchings, paint defects, etc.



Our Instruments

Measuring tools for the glass industry



Digital polariscope

The **digital polariscope** is designed for the analysis of internal residual stresses in glass and is equipped with a direct connection to the computer, which facilitates the analysis process and makes the entire procedure more efficient and intuitive. The integrated software makes it possible to visualize the collected data immediately, providing a clear and detailed representation of residual stresses in the glass.

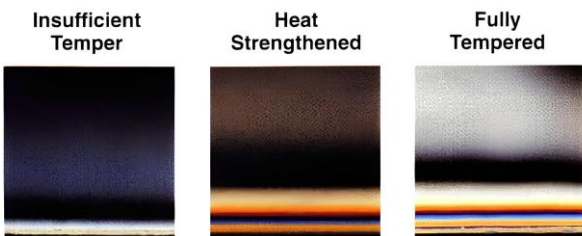
The digital polariscope allows accurate analysis of **internal stresses in glass containers**, ensuring effective control of the **structural quality** of the product.

The instrument operates in compliance with **ASTMC148-17**, applying the polariscopic method for the evaluation of residual stresses generated during **forming and cooling processes**.

Visualization of **interference fringes** makes it possible to identify **critical stress concentrations**, contributing to the prevention of **spontaneous breakage** and improving container reliability.

Portable polariscope

The **portable polariscope** is a smart pocket instrument designed to show stress and deformation patterns in tempered glass by using light polarization to detect stress in the glass and is suitable for a variety of operating conditions.



Our Instruments

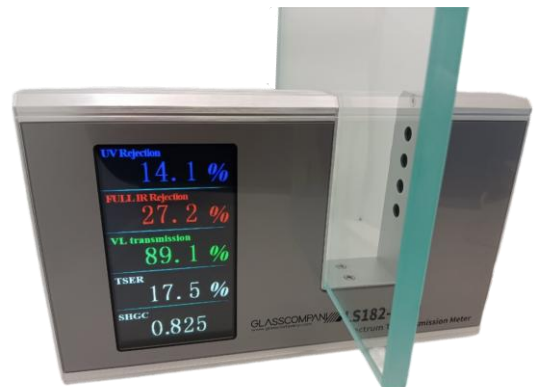
Measuring tools for the glass industry

Digital glass thickness meter



The digital glass thickness meter adopts the principle of laser reflection, which can measure glass thickness and the thickness of the inner air layer on one side of the glass. It is particularly suitable for occasions when traditional measuring instruments such as scales or calipers cannot measure or are difficult to use, such as architectural laminated glass, IGU, fireproof glass, etc.

Digital spectrophotometer



A high-precision digital spectrophotometer designed to measure the transmittance and reflectance of glass, enabling detailed analysis of the optical properties of materials. Ideal for ensuring quality and performance in glass treatment and coating applications.

Our Tempering Solutions

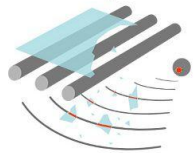
PATENTED



Glass Break Alert

Automatic Glass Break Detection System

The **Glass Break Alert** system is an innovative solution for tempering furnaces, designed to identify areas of broken glass within the chamber. It utilizes strategically placed sensors, allowing fast and accurate detection of damage to optimize the production process.



PATENT PENDING

Air flow energy recovery

The **Air Flow Energy Recovery** project involves the installation of mini-turbines on the tempering furnace to convert air flow into electrical energy.

This system ensures business continuity, allowing energy to be stored for uninterrupted production operation.

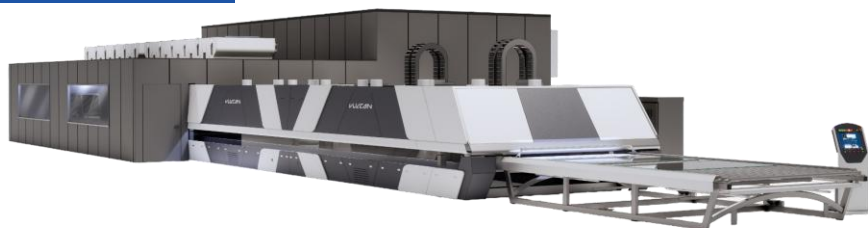


Our Commercial Partnerships



AUTHORIZED DEALER

Glass tempering furnace



Jinglass tempering furnaces are designed to ensure high quality in the glass tempering process, combining precision and reliability.

They offer advanced solutions for heat management and precise temperature control, ideal for meeting the needs of the glass industry.

Glass Company has been an official **Jinglass** dealer for over 15 years, offering customers specialized technical support and dedicated after-sales assistance.



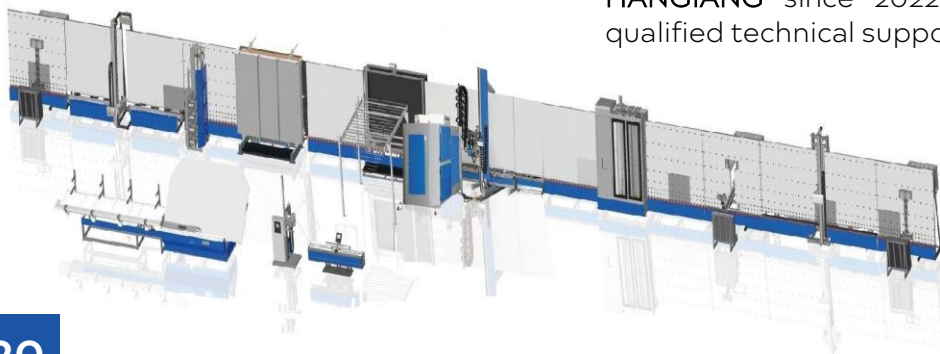
HANJIANG

AUTHORIZED DEALER

Automatic insulating glass production line

HANGIANG insulating glass production line is designed to provide efficiency and precision in the production of insulating glass. It integrates advanced technologies to ensure high quality and durability, meeting the modern needs of construction and energy saving.

Glass Company has been an official dealer of **HANGIANG** since 2022, providing customers with qualified technical support and after-sales service.



Our Commercial Partnerships



Glass washing machines

Industrial vertical and horizontal glass washing machines are designed to ensure optimum efficiency and quality in cleaning glass surfaces. These advanced systems use innovative technologies to remove dirt and impurities, ensuring impeccable results and reducing processing times.

Glass Company collaborates with several proven and reliable manufacturers of industrial glass washing machines.

Glass lamination systems

Glass lamination systems are designed to improve the safety and strength of glass products by joining layers of glass together through an advanced lamination process. These technologies provide greater protection against impact and breakage, making the glass ideal for construction and transportation applications.

Glass Company works with several proven and trusted manufacturers of lamination systems.



Our services

Advanced Glass Processing and Technologies

At our production facility in Pesaro, we carry out high-precision glass processing and develop advanced technological solutions, integrating LASERMEK laser systems with specialized manufacturing processes.

We also offer selected subcontract manufacturing services, specifically adapted and optimized for our machinery and technologies.

Main Production Capabilities:

- Laser glass processing: cutting, drilling, and engraving
- Technical and decorative mirror engraving
- Sandblasting-effect finishes achieved through laser technology
- Laser cutting of FULL VISION spacers for insulating glass units
- Production of heated glass with electrical parameter control
- 5G and Safe-Birds glass for special applications
- Customized solutions based on client technical specifications

Professional Consulting

Our team of professionals provides expert consulting to identify the best solution for your needs. After an initial evaluation, we ensure fast response times and maximum efficiency in delivering the most suitable solution.

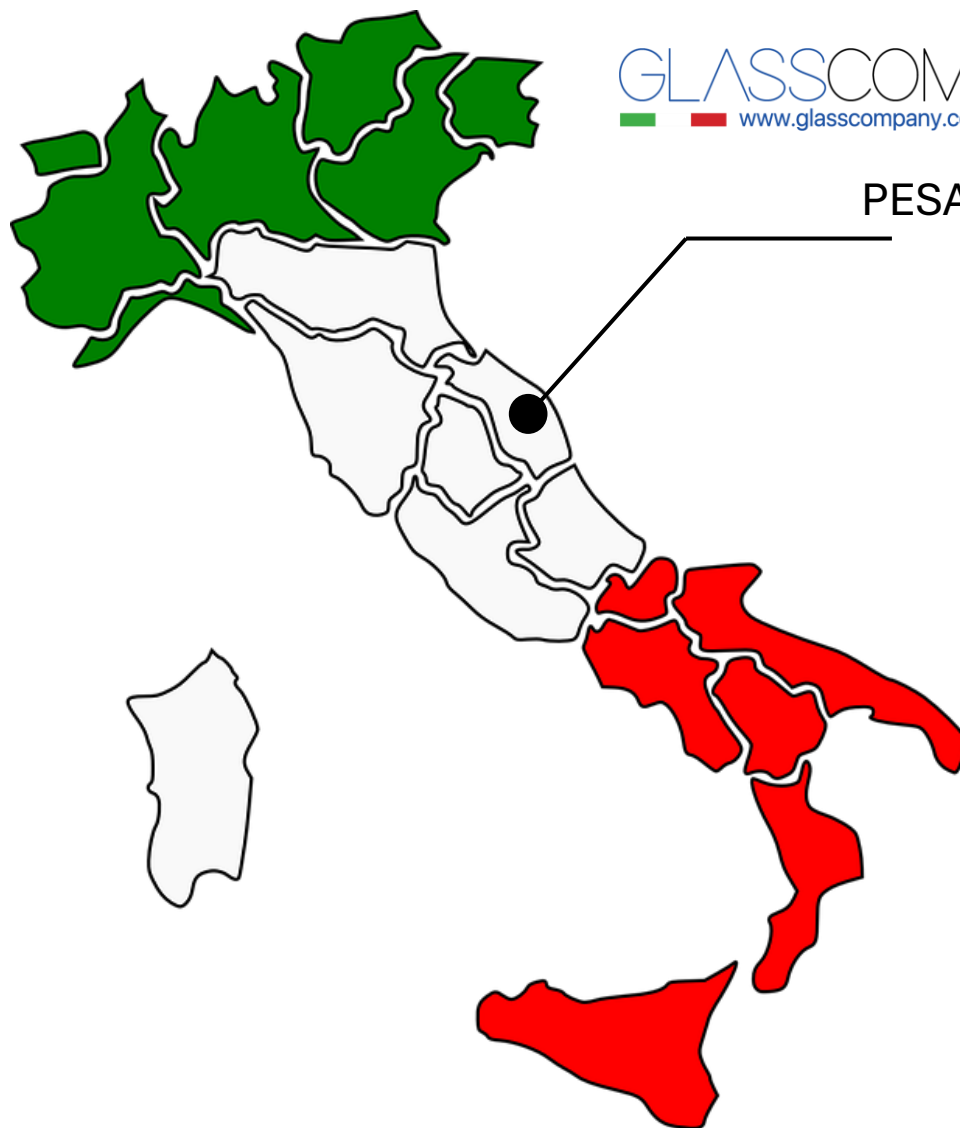
Development of Machinery and Special Products

Our team supports you in selecting and developing the most suitable machinery for your requirements, guiding you in choosing customized solutions, whether new or pre-owned.



One does not become
a leader by mere chance.

Our Contacts



GLASSCOMPANY 
www.glasscompany.com

Office and Production

Via Brigata Garibaldi, 33/35
61122 Pesaro (PU) – (Italy)
E-mail: info@glasscompany.com
Tel. +390721283519 Fax. +390721283310

Head office

Strada Cerreto, 59/4
61122 Pesaro (PU) – (Italy)

www.glasscompany.com

